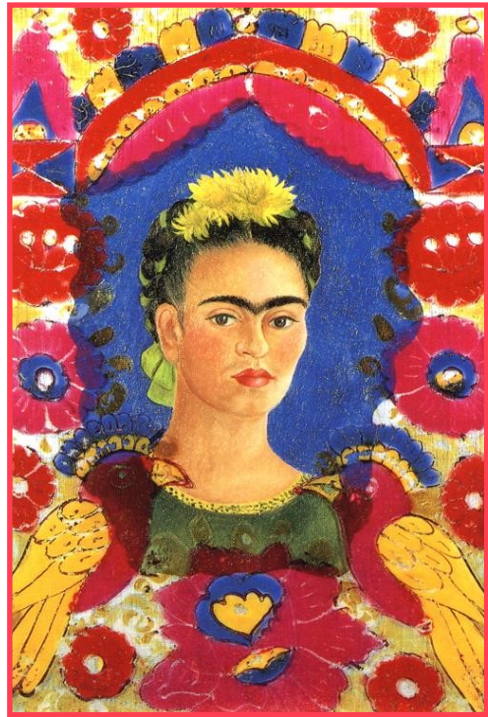


Frida Kahlo

Frida Kahlo is considered to be one of the most important artists of modern times. She was famous for painting self-portraits (pictures of herself) but she was particularly famous for painting women as strong people.

She used lots of bright colours in her self-portraits which reminded her of the vibrant colours of the hot country where she lived. Frida was very proud of her Mexican heritage.

She also included lots of tropical flowers and animals, such as monkeys and birds.



Art Ideas for all Children

- Kahlo painted several self-portraits, and she also included herself in many other paintings. One of her most popular self-portraits is 'The Frame', which features on a blue background amidst a colourful frame. Ask children to create a Frida Kahlo inspired self portrait in the style of 'The Frame'.
- Ask children to create paper jungles. Using a cardboard box such as the lid of a shoe box children can create beautiful paper jungles by cutting leaf shapes out of coloured paper, card. The can further be folder along the centre or curled around a pencil to create a 3D effect. Do the same with the petals, building up several layers. Arrange the leaves and flowers in the cardboard tray, allowing them to overlap one another to create the impression of a dense forest. Glue them into position. Challenge children to add an animal that might have been seen in one of Frida's paintings.
- Jungle drawings: Show children paintings of different artists' representations of the rainforest. Look at the many different shapes and variety of colours. Let the children produce their own interpretations using colouring pencils, felt-tips, oil pastels etc.
- Frida LOVED her pets and they often feature in her artwork. Ask children to explore drawing Bonito her pet parrot OR they can focus on their own pets and draw them in bright and vibrant colours!

Links to Websites

https://kids.kiddle.co/Frida_Kahlo (Frida Kahlo facts)

<https://www.youtube.com/watch?v=wfbLR15Bh74> (Frida Kahlo video)

